

Name	Type and Serial Number	Built		Standard Tonnage	Dimensions			Machinery		Armament		Men
		Begun	Completed		Length Overall	Beam	Mean Draft	Horsepower	Speed	Main	Anti-Aircraft	
CHARLESTON (F)	PG 51	1934	1936	2,000	328'6"	41' 3"	11' 4"	7,000	20.0	4-6"/47	10 Small	201
ERIE (F)	PG 50	1934	1936	"	"	"	"	"	"	"	"	"
TULSA (F)	PG 22	1919	1923	1,270	241'2"	"	9'11"	850	12.0	3-4"/50	9 Small	162
ASHEVILLE (F)	PG 21	1917	1920	"	"	"	"	"	"	"	"	"
SACRAMENTO (F)	PG 19	1913	1914	1,140	226'2"	40'10"	9' 7"	950	12.5	"	8 Small	"
MINDANAO (F)	PR 8	1926	1928	560	210'9"	31' 1"	5' 7"	3,150	16.0	2-3"/50	10 Small	80
LUZON (F)	PR 7	1926	1928	"	"	"	"	"	"	"	"	"
OAHU	PR 6	1926	1928	450	191'1"	28' 1"	5' 3"	2,250	15.0	"	"	65
PANAY	PR 5	1926	1928	"	"	"	"	"	"	"	"	"
TUTUILA	PR 4	1926	1928	370	159'5"	27' 1"	5' 1"	1,950	14.5	2-3"/23	"	60
GAUM	PR 3	1926	1927	"	"	"	"	"	"	"	"	"
ISABEL	PY 10	1916	1917	710	245'3"	26' 0"	8' 6"	8,400	26.0	2-3"/50	2-3"/23	112
EAGLE BOATS	PE	1918-9	1919	430	200'9"	25' 9"	6' 6"	2,500	18.0	2-4"/50	1-3"/50	63
SUBMARINE CHASERS	PC	1917	1918	75	110'0"	13' 6"	5' 5"	660	17.0	1-3"/23	2 Small	19

## GUNBOATS (PG) TWO ERIE CLASS OF 1933

No.	Name	First Comm.
51	CHARLESTON	1936
50	ERIE	1936

Now serving with the "Banana Fleet" in Central American Waters. A small seaplane with wings folded is shown in the above view, but is no longer carried. This type was the largest permitted by the naval treaties, and is the model for the six heaviest Coast Guard Cutters. Geared-turbines drive twin-screws. Range of 8,000 miles at cruising speeds. First ships to mount the new 47-cal. 6-inch gun.

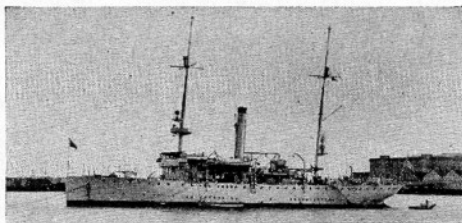


U.S.S. ERIE

James Downey

## GUNBOATS (PG)—THREE OF 1911-1918

Two of 1916—1918		
No.	Name	First Comm.
22	TULSA	1923
21	ASHEVILLE	1920
One of 1911		
19	SACRAMENTO	1914



U.S.S. TULSA

Theo. N. Silberstein

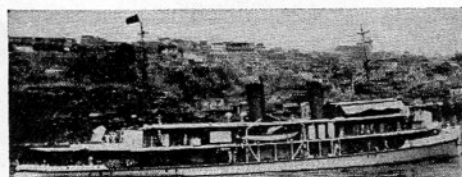
Of a once numerous type. The two later ones are active with the Asiatic Fleet. The SACRAMENTO is now an experimental vessel operating in the Atlantic.

Single-screw geared turbines. SACRAMENTO has a reciprocating machinery and is the only

coal-fired vessel other than minor District Craft now in active commission. Many of the older Coast Guard Cutters are similar to the Gunboats in appearance, size and performance, and would be equally valuable as escort or patrol vessels in wartime.

## RIVER GUNBOATS (PR)—SIX OF 1924

Two of 560 Tons		
No.	Name	First Comm.
8	MINDANAO	1928
7	LUZON	1928
Two of 450 Tons		
6	OAHU	1928
5	PANAY	1928
Two of 370 Tons		
4	TUTUILA	1928
3	GUAM	1927



U.S.S. LUZON

Official U. S. Navy Photograph

Since the Japanese conquered the greater portion of China's Coastal territory and her navigable Rivers, these formerly busy little ships have been more or less idle as stationaires.

Twin-screwed shallow draught craft, powerful enough to climb the Yang-tze rapids, designed to protect American interests in China's interior. All six were built at Shanghai. The PANAY was bombed by Japanese aircraft December 12, 1937 and sank in the Yang-tze above Nanking. She is now listed as: "Out of Commission at Cavite".