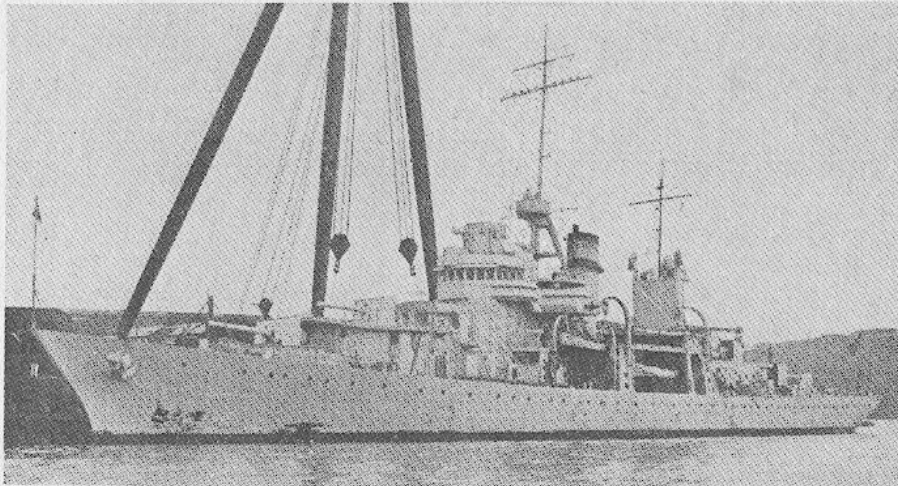


U.S.A.—Gunboats

Escort Vessels, rated as Patrol Vessels—Gunboats.



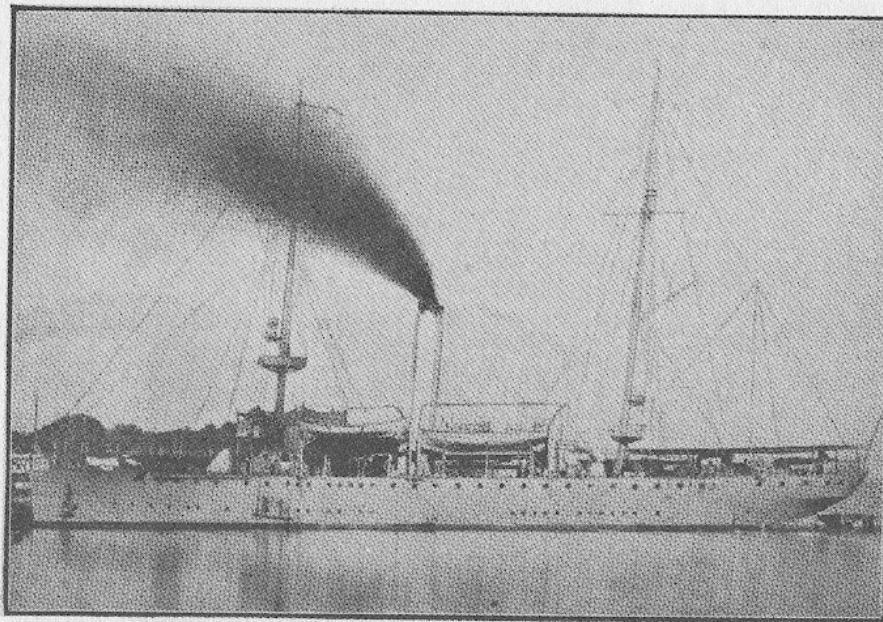
ERIE.

1936, R. Perkins.

CHARLESTON (Feb. 25, 1936). Built at Charleston Navy Yard.
ERIE (Jan. 29, 1936). Built at New York Navy Yard.

Standard displacement: 2,000 tons. Dimensions: 308 (w.l.), 328½ (o.a.) × 41½ × 11½ feet (mean draught). Guns: 4—6 inch, 2—quad. M.G. AA., 2—3 pdr. Protection: 1" side at waterline (3" over vital spaces); 3" C.T.; 1" shields and bridge; 2" + 1" decks. Machinery: Geared turbines. 2 shafts. S.H.P.: 6,200 = 20 kts.

Notes.—Ordered 1933 under Emergency Programme. Laid down in Oct. and Dec., 1934, and completed in Oct., 1936. 6 inch guns are 47 cal. new model.



TULSA.

1925 Photo, by courtesy of the Navy Dept.

TULSA (Charleston, N.Y., 25th August, 1922). **ASHEVILLE** (Charleston, N.Y., July, 1918). Displacement, 1270 tons (*full load*, 1760 tons). Complement, 185. Length (*pp.*) 225 feet, (*o.a.*) 241½ feet. Beam, 41¼ feet. *Mean draught*, 11½ feet. Guns: 3—4 inch, 50 cal., 2—3 pdr., 3—1 pdr. Machinery: Parsons turbine with reduction gear. 1 screw. Boilers: 3 Bureau (modified Thornycroft). Designed H.P. 800 = 12 kts. Fuel, 180 tons coal + 440 tons oil.