

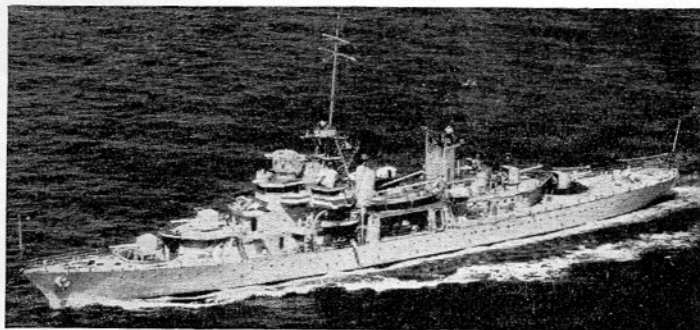
One-hundred and eighty-seven Patrol Craft were in service on December 1, 1941, ranging from the six-inch-gunned ERIES down to the tiny but deadly PT's. Another 247 were building or under conversion. Most of the smaller Patrol Craft operate with local defence forces from Section Bases, recently established along both Coasts and in Island Possessions as part of the Naval District organization, on British Territory in the Atlantic and on Danish Iceland and Greenland. Through 1940-1941 a dozen Coast Guard Cutters operated under naval Command. On Nov. 1, 1941 the U. S. Coast Guard became part of the Navy (See pages 56-58).

Name	Type and Serial Number	Built		Stand-ard Ton-nage	Dimensions			Machinery		Armament		Men
		Begun	Com-pleted		Length Overall	Beam	Mean Draft	Horse-power	Speed	Main	Anti-Aircraft	
CHARLESTON (F).....	PG 51	1934	1936	2,000	328' 6"	41' 3"	11' 4"	7,000	20.0	4-6"/47	10 Small	201
ERIE (F).....	PG 5C	1934	1936		"	"	"	"	"	"	"	"
TULSA (F).....	PG 22	1919	1923	1,270	241' 2"	"	9' 11"	850	12.0	3-4"/50	9 Small	162
ASHEVILLE (F).....	PG 21	1917	1920		"	"	"	"	"	"	"	"
SACRAMENTO (F).....	PG 19	1913	1914	1,140	226' 2"	40' 10"	9' 7"	950	12.5	"	8 Small	"
PADUCAH... (Ex-AG7)	PG18	1903	1905	1,085	200' 5"	35' 0"	12' 3"	1,220	12.5	4-4"/40	4-6 pdr.	172
DUBUQUE... (Ex-AG6)	PG17	1903	1905		"	"	"	"	"	"	"	"
MINDANAO (F).....	PR 8	1926	1928	560	210' 9"	31' 1"	5' 7"	3,150	16.0	2-3"/50	10 Small	80
LUZON (F).....	PR 7	1926	1928		"	"	"	"	"	"	"	"
OAHU.....	PR 6	1926	1928	450	191' 1"	28' 1"	5' 3"	2,250	15.0	"	"	65
TUTUILA (To China)	PR 4	1926	1928	370	159' 5"	27' 1"	5' 1"	1,950	14.5	2-3"/23	"	60
WAKE.....	PR 3	1926	1927		"	"	"	"	"	"	"	"
ISABEL.....	PY 10	1916	1917	710	245' 3"	26' 0"	8' 6"	8,400	26.0	2-3"/50	2-3"/23	112
EAGLE BOATS PEI-112 Type	1918-9	1919	1919	430	200' 9"	25' 9"	6' 6"	2,500	18.0	2-4"/50	1-3"/50	63
PC578 Class..... (Steel)	PC	1941	1942		173' 0"	"	"	"	"	"	"	"
PC461 Class..... (Steel)	PC	1940	1942	335	165' 0"	"	"	2,400	25.0	"	"	"
PC497 Class..... (Wood)	PC	1941	1942	100	110' 0"	18' 0"	6' 0"	1,200	20+	"	"	"
PCI-448 Class..... (Wood)	PC	1917	1918	75	110' 0"	15' 6"	5' 5"	660	17.0	1-3' /23	2 Small	19
PT21 Type (Wood)	PT21-68	1940-1	1941		77' 0"	"	"	4,050	50+	4 Tubes	4-50 MG	10
PT10 Type (Wood)	PT10-20	1939	1940	35	70' 0"	15' 0"	3' 0"	4,050	50+	4 Tubes	4-50 MG	10

GUNBOATS (PG): TWO ERIE CLASS OF 1933

- No. Name First Comm.
- 51—CHARLESTON.....1936
- 50—ERIE.....1936

As Flag, Central American Special Service Squadron. Both sisters served with the "Banana Fleet." The CHARLESTON has been operating in the Northwest (Thirteenth District), basing at Seattle. They were the largest Patrol Craft permitted by the now defunct Naval Treaties. Each carries a folding seaplane. Geared-turbines, twin screws. Range: 8,000-miles. ERIE was built at the New York Yard; CHARLESTON at the Charleston Yard.



U.S.S. ERIE

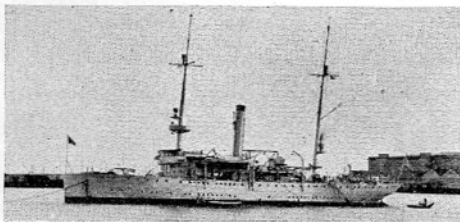
Official U. S. Navy Photograph

GUNBOATS (PG)—FIVE OF 1902-1918

- Two of 1916—1918
- No. Name First Comm.
- 22—TULSA.....1923
- 21—ASHEVILLE.....1920

- One of 1911
- 19—SACRAMENTO.....1914

- Two of 1902
  - 18—PADUCAH (ex-AG7) 1905
  - 17—DUBUQUE (ex-AG6) 1905
- Single screw geared turbines in PG21-22; reciprocating engines in others.



U.S.S. TULSA

Courtesy Ted Stone

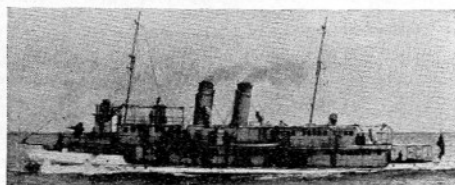
Of a once numerous type, TULSA and ASHEVILLE based at Canton, China, before the war. SACRAMENTO, long on the Asiatic Station, has been in the Atlantic since 1939. Now oil-fired, the PG19 operates with the Inshore Patrol. Between wars the PG17 and 18 were classed as Training Ships. The U. S. Coast Guard's larger Cutters are generally similar to the Navy's Gunboats.

RIVER GUNBOATS (PR)—FIVE OF 1924

- Two of 560 Tons
- No. Name First Comm.
- 8—MINDANAO.....1928
- 7—LUZON.....1928

- One of 450 Tons
- 6—OAHU.....1928

- Two of 370 Tons
  - 4—TUTUILA.....1928
  - 3—WAKE (Ex-GUAM).....1927
- WAKE, Station Ship at Shanghai, was captured by the Japs Dec. 8, 1941.



U.S.S. WAKE

Official U. S. Navy Photo

Twin screw, shallow draft Gunboats, built to patrol Chinese Rivers. All were built at Shanghai. The TUTUILA was transferred to the Chinese Navy in March 1942. The OAHU, LUZON and MINDANAO, active at Bataan and Corregidor, were demolished during May. The 450-ton PANAY was sunk by Jap aircraft on Dec. 12, 1937.